



LUNGS

SOLUTION

Page 1 of 2

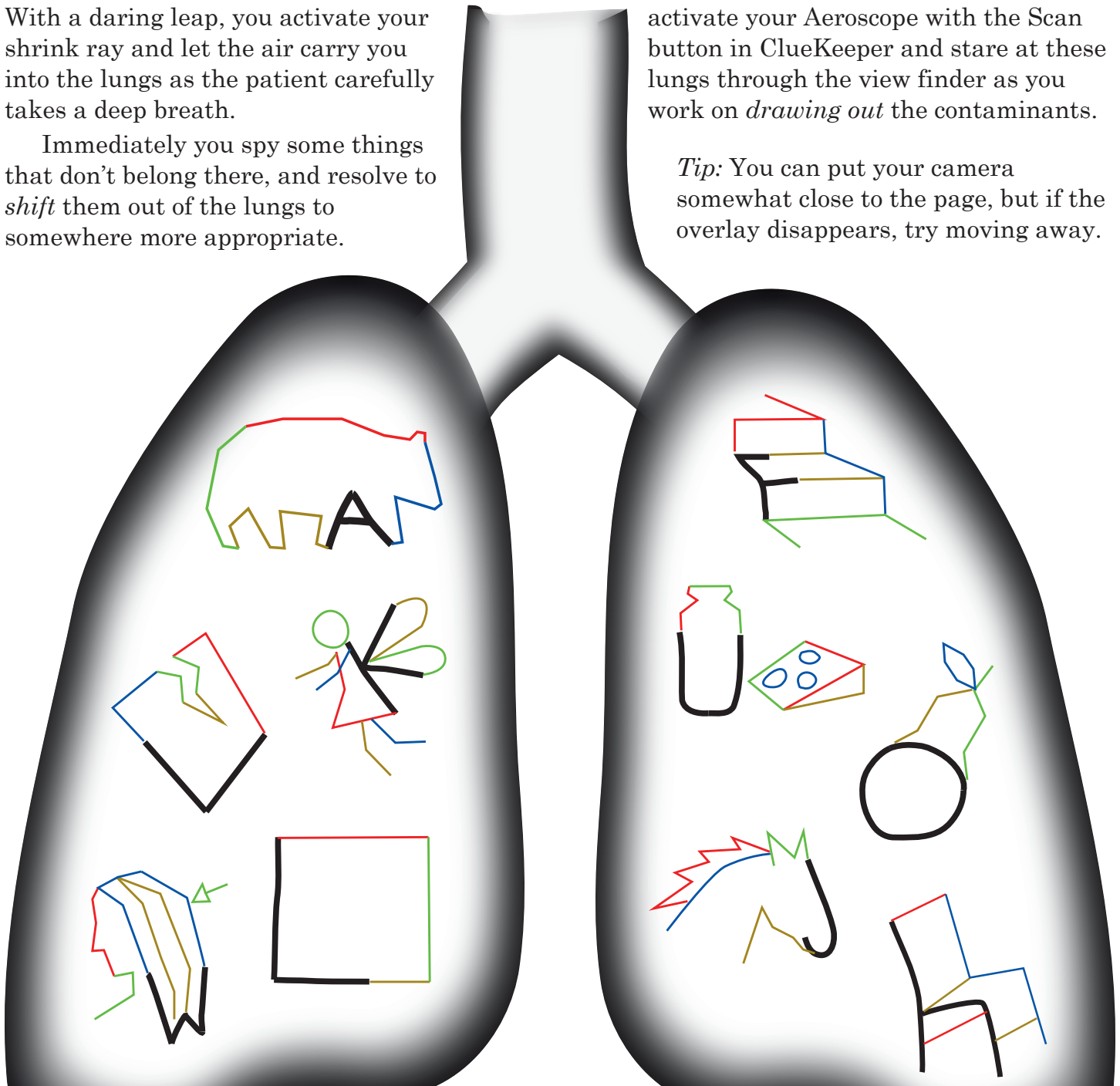
Puzzle 1

It *sounds* like something very strange is contaminating the air in the patient's lungs. With a daring leap, you activate your shrink ray and let the air carry you into the lungs as the patient carefully takes a deep breath.

Immediately you spy some things that don't belong there, and resolve to *shift* them out of the lungs to somewhere more appropriate.

But first, beware! There's more than meets the eye here... you'll need to activate your Aeroscope with the Scan button in ClueKeeper and stare at these lungs through the view finder as you work on *drawing out* the contaminants.

Tip: You can put your camera somewhat close to the page, but if the overlay disappears, try moving away.



Zappar traces reveal images. Each includes a letter shape and its name contains the sound AIR.
BEAR (A), TEAR (V), FAIRY (K), HAIR (W), SQUARE (L),
STAIR (F), DAIRY (U), PEAR (O), MARE (J), CHAIR (H)



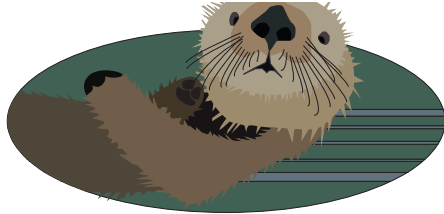
1. Lungs

Meanwhile, *shift* your attention to identifying these. As you take things that are *not air* out of the lungs, you'll find *sound* places to re-attach them here. Once everything is fully repaired, you'll know how to treat the first things you spied. Then maybe everyone can breathe a little easier!

SOLUTION

Page 2 of 2

Remove the AIR sound from each item in the lungs. Take the remaining fragments and pair them with one of the items below, putting this new item where AIR was. For example: FAIRY - AIR = F__Y, which pairs with LAKE to make FLAKY. Take the letter included with the lung image and shift it the same amount and direction as the corresponding image caption to get: **PURE OXYGEN**



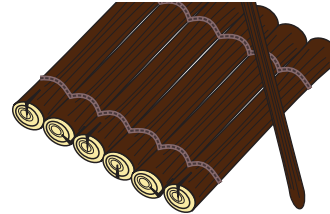
KPPAN → 4
OTTER square squatter

L → 4
P



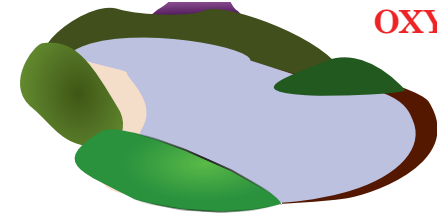
LCWY → 6
RICE pear price

O → 6
U



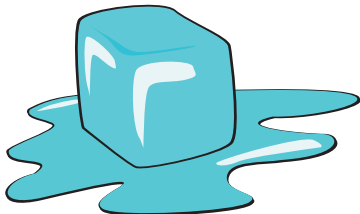
3 ← UDIW
RAFT dairy drafty

3 ← U
R



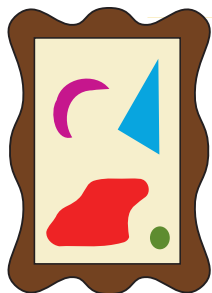
6 ← RGQK
LAKE fairy flaky

6 ← K
E



DXZ → 5
ICE mare mice

J → 5
O



ZQS → 1
ART hair heart

W → 1
X



TOBKZE → 3 1 ← VSO
WRENCH tear trench URN chair churn

V → 3
Y



1 ← H
G



NWGA → 4
RAKE bear brake

A → 4
E



JAFY → 8
RING stair string

F → 8
N